

# ASHERVILLE

*Established 1868*

## ART, COMMERCE, & ARCHITECTURE

*A Bank to be Proud Of*

The simple yet elegant lines of the old Asherville State Bank building recall the heyday of Asherville, when craftsmen incorporated beauty as well as function into the commercial structures that showcased the community's wealth.

*Kansas Sampler*



*Eight Rural Elements*

## CUISINE & CUSTOMS

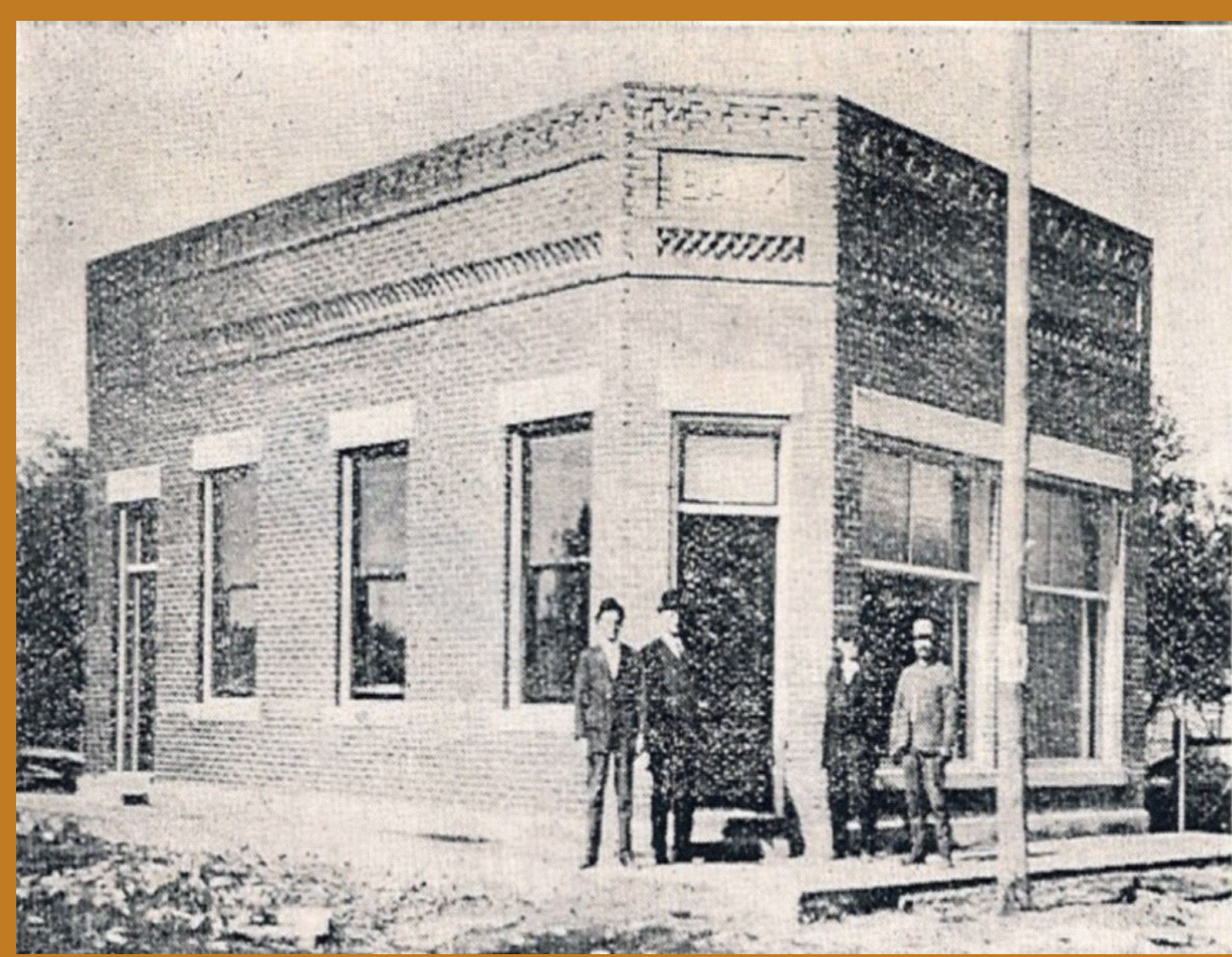
*Food—What Else?*

Local church suppers, potlucks, and other social functions are a great way not only to meet the members of the community but also to try the local dishes made by the great area chefs.

## GEOGRAPHY

*Bless the Creek & the River*

Asherville's location on Asher Creek and near the Solomon River made it a prime site in the eyes of the first settlers for their new homes.



*The solid, modern red brick Asherville State Bank brought a sense of security and prosperity to the community.*

## HISTORY

*From Stockade To Established  
Community*

Although not one of the largest towns in the Solomon Valley, the village of Asherville can lay claim to be one of the oldest.

Asherville was a part of the John Rees homestead, when it was laid out and platted in 1868. Indian troubles that same year led to a stone stockade being constructed on Thomas Howie's homestead.



*Indian Raid Cemetery near Asherville is maintained in memory of the victims of Indian raids in the region during the late 1860s.*

The community history is full of "firsts" for Mitchell County - the first permanent settlement; first general store; first post office; first religious services; first rural high school district; first white child born in the county (Sherman Grant Rees, son of John); and the first couple married in the county (Whit McConnel & Nancy Marshall).

The first grade school in Asherville was built in 1893 with the high school following two years later; it closed in 1944. The town plat was at last recorded on March 15, 1902. A fine community hall was erected in 1918 with great fanfare and served the public until the 1960s. It featured a floor dug into the ground so that basketball could be played inside.

Asherville was never incorporated and remains a quiet village.

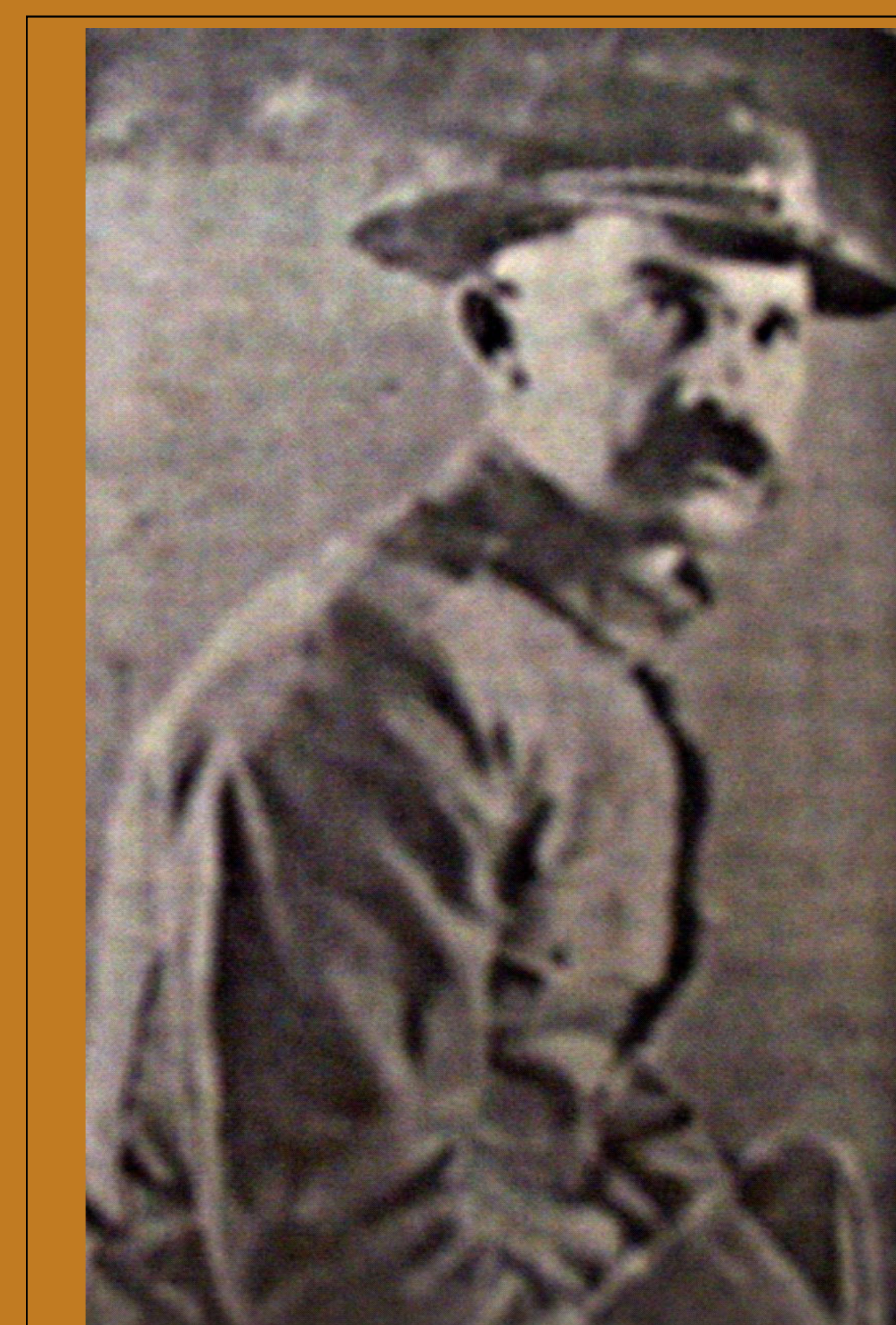


*The Stitch and Chatter Club took care of Baker Place, Asherville's small park, for years and were responsible for many other civic improvements. Standing from left to right are Myra Griffith; Mrs. Mabel Oakley; Mrs. Hazel Strawn; Mrs. Alice Seely; Mrs. Bertha Gates; and the two "supervisors," Seth Wilson and Roy Gates. In front are Mrs. Augusta Wilson, left, and Mrs. Fern Shull.*

## PEOPLE

*The Town That Rees Built*

John Rees, came to America from Liverpool, England, in 1841, locating in Pennsylvania and Missouri before enlisting in the Union Army during the Civil War. While in the army he gradually rose from private to major. After the war Rees came to the present site of Asherville, which he homesteaded on April 26, 1866. He was the first postmaster in Mitchell County, with the Asherville post office being established in 1869. Rees was elected the Mitchell County representative to the state legislature in 1872 and held the offices of justice of the peace for 10 years and postmaster for seven years.



*A major during the Civil War, Englishman John Rees was Asherville's first and most famous citizen from its founding in 1866 until his death in 1922.*